

RCE ENGINEERING

COMPANY PROFILE

2015

Automation – Energy – Electrical – Reverse engineering
Micro/Pico water turbine & System
Low/Hi temp furnace/dryer system
General Machinery : Milling – Turning – Welding - Drilling
Ferrous & Non Ferrous casting Plastic & Rubber parts
Part for Mining, Oil & Gas - Didactic



ABOUT THE COMPANY

RCE Engineering is a company that sets its professional expertise in General Machinery, designing and manufacturing Hydro Turbine and system, Reverse Engineering, and Special Purpose Machinery.

Providing the right solution to the customers in mechanical, electrical and the process between those areas where efficient and proper treatment was needed, RCE Engineering, by the experience, is heading towards to be one stop solution provider in every parts of technical aspects in various industries, such as textile, metal, food, building, education, electric and electronic, renewable energy, oil and gas, and mining.

RCE Engineering has its vision of providing an efficient solution for greener future by manufacturing machineries that in application will run an effective and efficient production process. Therefore, RCE Engineering has been supporting greener future together with the clients.

HISTORY

In 1997, the Indonesian economic crisis resulted in low capability in purchasing imported machinery. Considering it was an advantage and convenient for user to be able to purchase machinery with affordable price, the company decided to manufacture the machinery similar to the imported ones but produced locally.

Started in 1998, RCE Engineering was established as a company that moves in general industrial automation service and maintenance and since then, it has been involved in several projects in machinery manufacture. Several projects were completed in this area of expertise, such as in designing and manufacturing Timber Drying System in 1999 to 2005, and those in mechanical & electrical for building and factory, including switchgear panel making.

There are also some projects in Special Purpose and Reverse Engineering as an OEM, started with contributing in Food Industry by manufacturing automatic meatball maker and some in Metal Industry works which was marked by producing automatic copper tube cutting machine for air conditioning factory. In agriculture field, RCE Engineering successfully manufactured automatic bracket washing machine for hatchery in 2003 and 2000 units of tobacco drying system in NTB in 2004.

In Metal Industry, an Annealing furnace for die casting mould for automotive factory was designed and manufactured in 2005 and hot dip galvanizing factory was designed and built in 2008. Various complicated spare parts for Textile, Mining, Oil and Gas, automotive have been manufactured since 2004 until present. All projects that have been completed are in accordance to technical aspect of the clients.

In 2004, the company started its contribution in Micro hydro by producing micro hydro control system and mechanical turbine parts as subcontractor. In 2007, RCE Engineering designed and manufactured first complete Crossflow and Propeller Turbine and has undergone several more works in Hydro turbine & system from 500 Watt to 500Kwatts, high, medium, and low-head site.

RCE Engineering also gave contribution in building industry by designing and manufacture machinery that produces lightweight concrete and dry mix in 2006. Since the first year of its establishment, RCE has been capable of working on wide range service areas, which are in Automation, Energy, Electrical, Casting, Reverse Engineering, General Machinery, and in Micro/Pico Water Turbine and System.

COMPANY MANAGEMENT

CV. RCE ENGINEERING - Rizki Control and Electrical

Npwp . 02.446.214.5-424.000

Management :

Director : Dwi Rizki Sarfianto

Employees : 15 persons in General Machinery and Construction

2 persons in Welding (more than 5 on call)

1 person in Electrical & Control System

Office : Jl. Pasirluyu XII No.16 Bandung

Workshop : Jl. Kerkof No. 129 Leuwigajah-Cimahi

Jl. Sukamanah, Desa Pangauban, Batujajar

COMPANY PRODUCT & SERVICES

Designing and manufacturing machinery, RCE has its major area of business in engineering and provides services in that particular area.

Specialization:

- Machinery and Spare Part
- Special Purpose Machinery and Reverse Engineering
- Hydropower Services

Areas Served:

Metal Industry, Food & Drugs Industry, Building Industry, Energy, Agriculture, Textile Industry

EXPERIENCE IN AREAS OF SERVICE

- In 1998, RCE started its operation in general industrial electronic automation service & maintenance.
- In 1999 a project of automation in wood Kiln Dyer and Essential oil distillation was conducted.
- In 2000, RCE started its boiler & heating business by manufacturing the machinery in a workshop at Pasirkaliki, Bandung. RCE also handled heat service and maintenance.
- In 2003, completing the workshop with welding facility and machinery. By doing so, RCE started to involve in the area of producing special purpose machinery and M&E system modification. It also manufactured spare parts for industrial machinery.
- In 2004, involved in Micro Hydro Control System business & mechanical turbine part as a subcontractor.
- In 2005, conducted total system reverse engineering service and OEM for some big companies.
- RCE started to manufacture small scale hydro turbine system by reverse engineering in 2006.
- In 2007, RCE designed & manufactured the first complete Crossflow Hydro Turbine called T-Nas, which was an improvement from former SKAT type T-12.
In the same year, RCE manufactured machinery for concrete making. RCE designed and built a factory for hot dip galvanizing at Jababeka II.
- In 2008, RCE designed and manufactured first flow controlled Crossflow Turbine.
RCE established mechanical workshop at Leuwigajah, Cimahi, specializing in general machinery service and also foundry part at Klaten.
- In 2009 Design first RCE's Low head hydro turbine and Pico scale hydro turbine with permanent magnet generator.
- Until 2012, RCE has been capable to work in the area of Automation – Energy – Electrical – Casting – Reverse Engineering – General machinery – Micro/Pico water turbine and system.

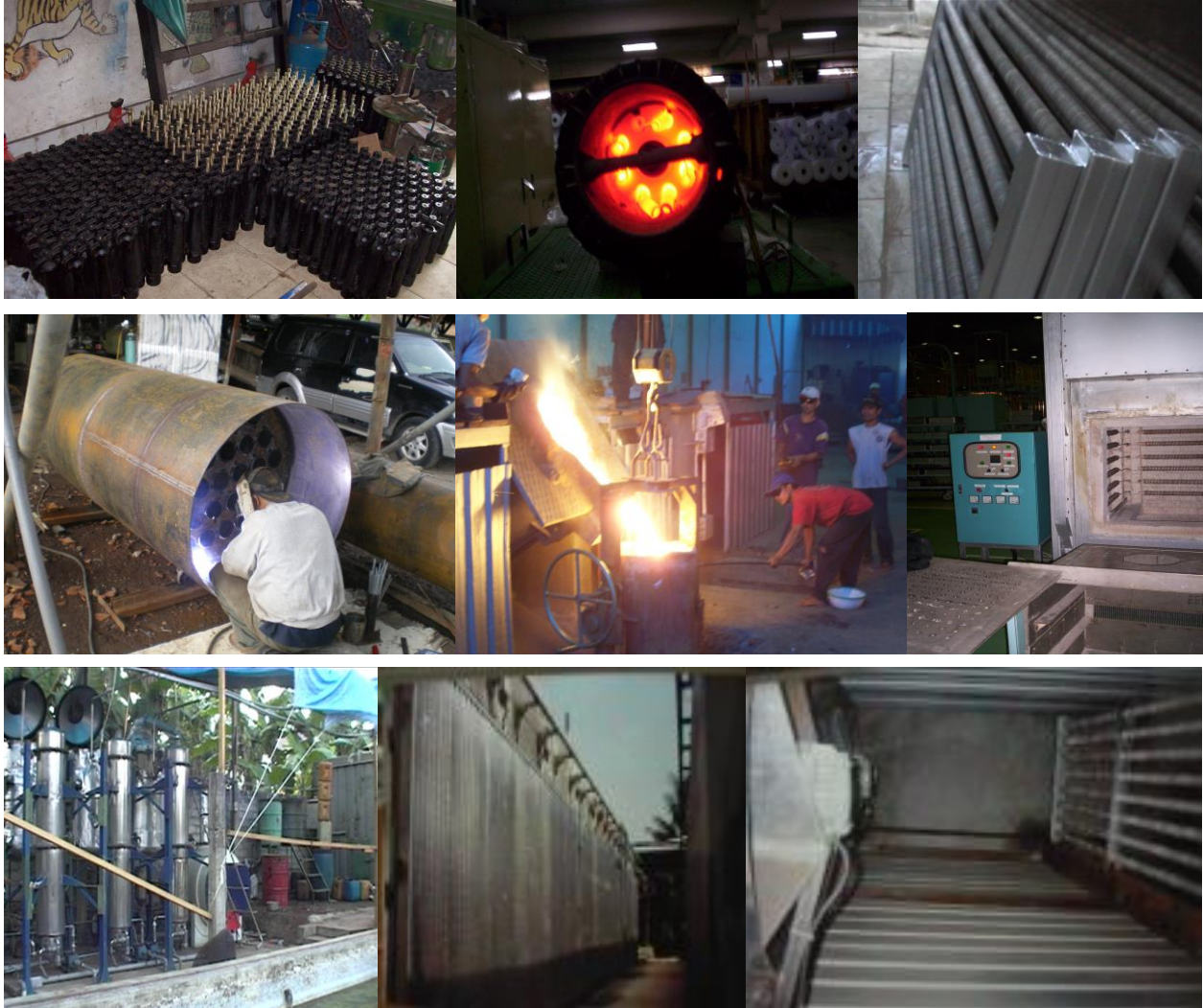
Images/Photographs:



Picture. 1. Galvanizing Acid Pickling Bath and System , Hi temp drying furnace, Caustic soda tank , Vertical superheated steam boiler, Smelter furnace



Picture 2. Electrical & Control Services



Picture 3. Heat Service

Manual LPG Gas Burner production, Special Purpose Electric Heater. Finned Tube Steam Heat Exchanger, Shell and tube heat xchanger, Induction melting furnace, Annealing furnace, Essential oil distillation machine, Timber kiln Dryer, Steam heat Xchanger installation



Picture 4. Hydro Turbine Services from 500Watts to 500Kwatts with 2 meter to 200 meter Head.



Picture 5. General Machinery, Machinery for Civilwork, Spare part for General industry, Oil and gas/ Mining

FACILITIES

Mechanical :

- 1 unit Lathe machine 900mm swing over bed, 3000mm work piece length
 - 1 unit Lathe machine 600mm swing over bed, 2000mm work piece length
 - 1 unit Lathe machine 400mm swing over bed, 1500mm work piece length
 - 2 units of Lathe machine 300mm swing over bed, 1000mm work piece length
 - 1 unit drill & milling machine 600mm X 200 mm bed
 - 1 unit universal milling machine 1000mm X 300mm bed
 - 1 unit universal Drilling, Milling & vertical shaping machine 1200mm X 300mm bed
 - 2 units of bench drill
 - 1 unit magnetic drill
 - 2 units of radial drill 1200mm swing arm MT4-3 Cone adapter
 - 8 units of arc welder 160 Amp & Accessories
 - 1 unit arc welder 250Amp & Accessories
 - 1 unit 18 Litre **3D** printer for prototyping – material ABS/PLA
 - 1 unit arc welder DC/AC 400Amp
 - 2 units of Electronic Arc welder 160 Amp
 - 2 units of simple Arc/ Argon Tig Welder 160 Amp
 - 1 unit Controlled Arc/ Argon Tig welder 200Amp
 - 1 unit Acetylen Welder
 - 1 unit plasma cutter
 - 1 unit Automatic linear flame cutter
 - 2 units of manual flame cutter
 - 3 units of medium size air compressor
 - 6 units of angle grinder 4 inch
 - 1 unit angle grinder 7 inch
 - Precision measuring tool up to 1000mm
 - 2 Unit Honda OHV gasoline generating set 7500Watt
 - Vertical & horizontal angle dividing tool
 - Various standard and special cutting tool and gauging
 - 500KG Butterfly Type Medium frequency induction furnace (klaten)
- Other larger machinery are held by our partner workshop :**
- Lathe Machine diameter up to 3000mm
 - Lathe Machine Length up to 7000mm
 - Gear making machine
 - CNC Machining center

Electrical & Electronics :

- 1 unit digital storage Oscilloscope 2 channel 60Mhz
- 1 unit digital CRT Oscilloscope 2 channel 60Mhz
- 1 unit analog oscilloscope 2 Channel
- 1 unit handheld digital storage Oscilloscope & DVM 40Mhz
- 1 unit palm size digital storage Oscilloscope & function generator
- 3 units of digital multimeter
- 2 units of analog multimeter
- 2 units of Garmin GPS 60CSX
- 1 units of Garmin GPS Dakota
- 1 unit PIC microcontroller programmer
- 1 unit ATMEL microcontroller programmer
- 3 units of regulated laboratory power supply
- 1 unit function Generator
- 1 unit Digital earth tester
- 1 unit phase rotation tester
- 2 unit AC Clamp tester
- 1 unit AC/DC Clamp tester
- 2 units of laser infra red thermo meter
- 1 unit LAN tester
- 1 set hydro turbine simulator
- 1 set Moisture content meter
- 1 set Clinometer
- 1 set Water current meter
- 2 set Air velocity meter
- 1 set Leica laser distance meter
- 1 set Microscope 1500X
- 1 Set hook type digital scale 500Kg
- Soldering/Desoldering tool
- Low duty and heavy duty crimping tool up to 15Ton